

# Pischel Construction, LLC

101303 Ridgeview Drive, Cottonwood Springs  
 Kennewick



The understated entry defies the luxury lifestyle for which this home was designed. From the indoor basketball area to the spa/gym off the master; from the gourmet kitchen to the therapeutic water falling into the sunken hot tub; from the majestic country views to the security and peace of 10" thick concrete insulated walls, all you experience will speak to an imaginative and unlimited enjoyment of life. We are happy to share this with you — our vision of a dream home.



**Tyson Pischel**

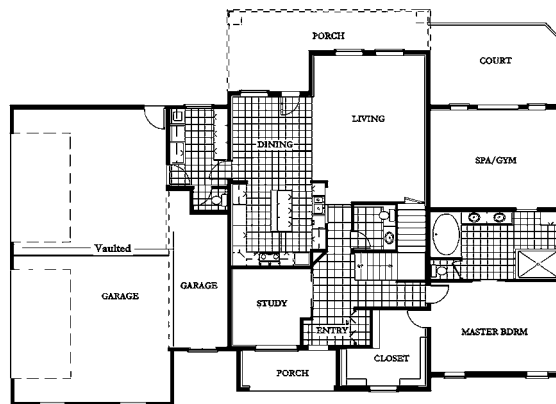
Linda and I have enjoyed the blessing of having great project managers, craftsmen, and customer service personnel on our team. With their help we are offering the next generation of home. Available in every new home we build are the benefits of 10" thick insulated concrete walls, super seal casement windows, and a unique indoor air quality

system. Your benefits are energy dollars back in your pocket, healthy indoor air, and unheard of insulation from noise and outside elements. All this from an award-winning member of the Home Builders

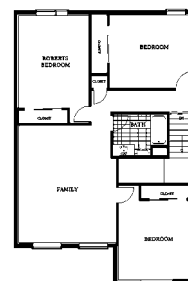
Association with 23 years in the construction business.



**(509) 542-8500**



**Main Floor**



**Upper Floor**