

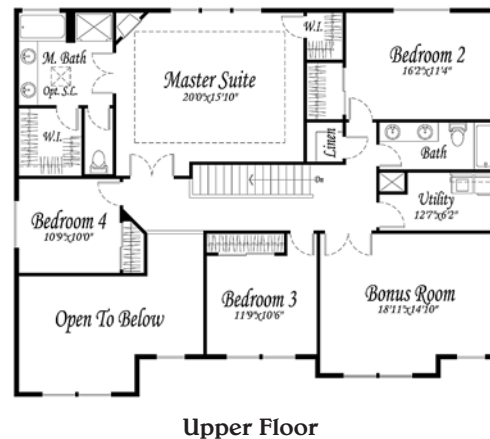
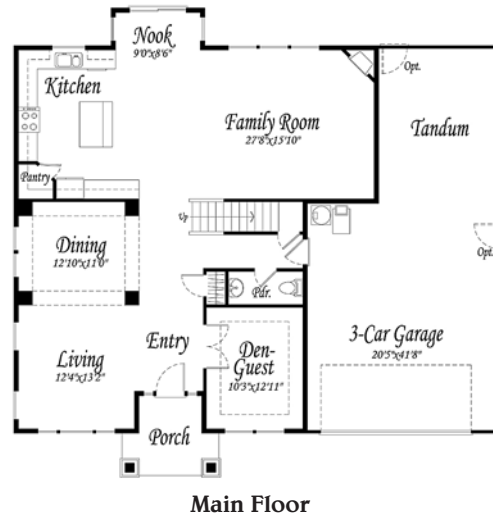
# JLS Custom Homes, Inc.

2100 S. Tweedt Street, Cherry Blossom Meadows  
 Kennewick



34

JLS Custom Homes invites you to tour our 3,154 square foot Deschutes floor plan at our Cherry Blossom Meadows subdivision located off Union and 21st in Kennewick. This floor plan features four bedrooms with a spacious master bedroom that comes standard with a gas fireplace. In addition to the four bedrooms, this floor plan includes a bonus room and den that can be used as additional sleeping quarters. The soaring vaults in the entry provide an impressive open feel from the time you set foot inside the house. The large gourmet kitchen is ideal for family gatherings or simply cooking and entertaining for friends. For that special occasion, the Deschutes also features a living room and formal dining room. Floor plans at Cherry Blossom range from 1,812 square feet to 3,154 square and with over nine floor plans to choose from, you will be sure to find a floor plan that fits your lifestyle.



Jason Sage

JLS Custom Homes has earned a reputation of unsurpassed value, innovative design and an unwavering focus on detail and customer satisfaction. With JLS Custom Homes, quality isn't an afterthought; it's our first thought. We invite you to discover the JLS Custom Homes difference yourself.



(509) 783-5668 • [jlscustomhomes.com](http://jlscustomhomes.com)