

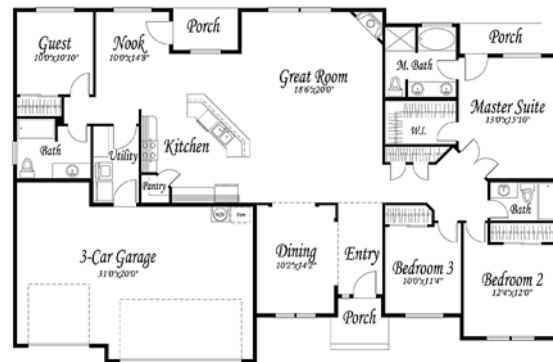
JLS Custom Homes, Inc.

3915 Road 106, Wilson Meadows
Pasco



23

JLS Custom Homes invites you to tour our 2,309 square foot Willamette floor plan in Wilson Meadows in Pasco. This one-story home features four bedrooms, including a large master bedroom with a private door leading to a covered porch. The great room comes standard with a gas fireplace. It is ideal for hosting family gatherings, with its high ceilings and expansive dimensions that give it an open feel. The Willamette features a three-car garage perfect for storing a boat or other toys. The dining room can be used for any special occasion. Floor plans at Wilson Meadows range from 1,812 to 3,154 square feet. With more than nine floor plans to choose from you will be sure to find one that fits your lifestyle.



Jason Sage

JLS makes customer satisfaction the number one priority and President Jason Sage knows it starts with everyone who is part of the building process. "It is important that everyone who works with JLS has a sense of pride in what we achieve," says Sage. Much of JLS' success can be attributed to the relationships they build with each buyer. JLS

Custom Homes is committed to offering high quality homes with an emphasis on customer satisfaction.



(509) 783-5668 • jlscustomhomes.com