

Golf View Construction, LLC

314 Columbia Point Drive

Moorings at Columbia Point, Richland



18

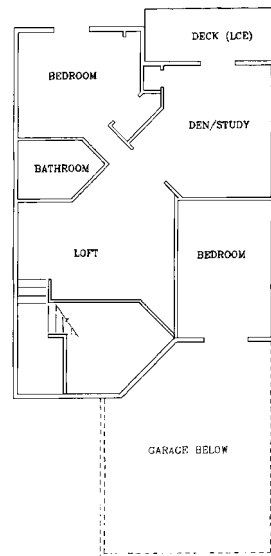
The “Moorings at Columbia Point” condominium homes are in a true resort setting. Across from the golf course and overlooking the Columbia River, homeowners are within a short stroll of the Yacht Club and major restaurants. The two story entry greets you with ceramic tile and wood railing leading to a large loft with built-in wet bar. Two bedrooms and a study complete the 2nd floor. From the deck you view the park-like courtyard. The first floor features an open kitchen with granite tops and high-end appliances. The living area with fireplace adjoins the master suite featuring a shower and soaking tub accented with tile.



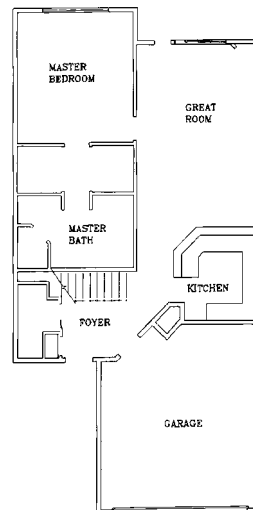
Tom Masterson

Golf View Construction, LLC, is a member of the T. R. Masterson Construction family of builders. Manager Tom Masterson is a past recipient of many parade home awards including “People’s Choice” and “Best Workmanship.” Tom believes quality designs require the skills of builder, architect, and artisan. This fusion makes it possible to incorporate details that bring lasting value to Golf View Construction homeowners. These condominiums are geared toward the lifestyle of the client,

whether elegant or casual living. Serving the Tri-Cities for more than 28 years, Tom is enjoying building for second generation families.



Upper Floor



Main Floor

(509) 735-3400